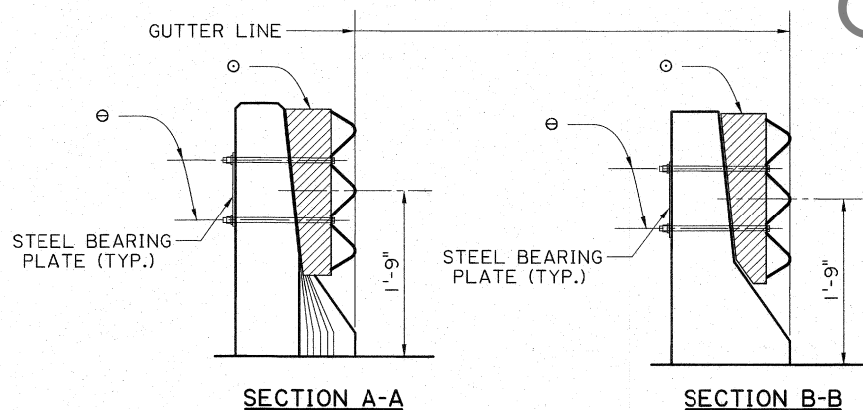


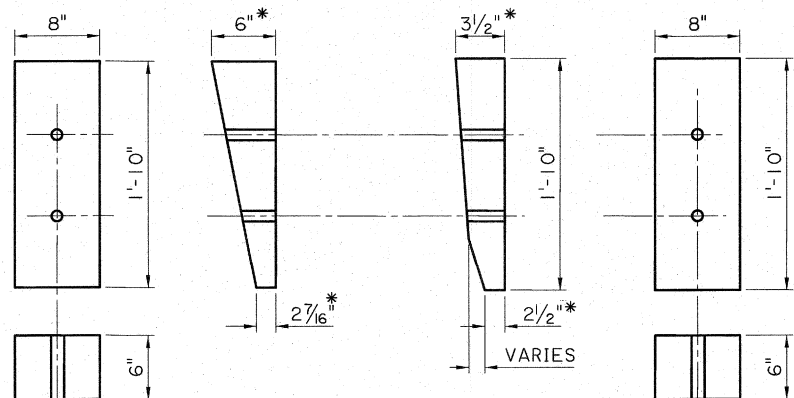
PLAN VIEW



SECTION A-A

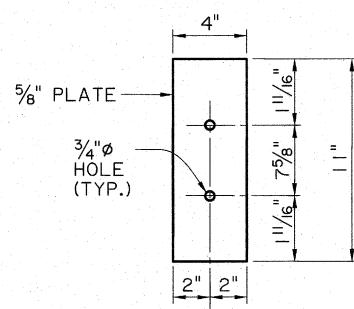
SECTION B-B

- ⊙ 2 - 5/8" ⌀ BUTTON HEAD BOLTS WITH 5/8" BEARING PLATE, NUTS, & WASHERS. (TYP.)
- ⊙ 6" X 8" X 1'-10" TREATED TIMBER BLOCK CUT & SHAPE IN THE FIELD TO FIT.



SHIM BLOCK FOR SECTION A-A

SHIM BLOCK FOR SECTION B-B



STEEL BEARING PLATE

NOTES:

1. FOR ADDITIONAL INFORMATION ON GUARD RAIL TRANSITION, SEE STANDARD PLANS FOR HIGHWAY GUARD RAIL (MASH), SHEET 3 OF 11.
2. ALL HARDWARE AND TIMBER USED FOR CONNECTING THE SINGLE THRIE BEAM TO THE EXISTING BRIDGE RAIL SHALL BE PAID FOR UNDER ITEM 704-01-01020, GUARD RAIL (SINGLE THRIE BEAM), (6'-3" POST SPACING) PER LIN. FT.
3. ANY DAMAGE DONE TO THE EXISTING STRUCTURE DURING INSTALLATION OF THE GUARD RAIL SHALL BE REPAIRED AT THE CONTRACTORS EXPENSE AND TO THE SATISFACTION OF THE PROJECT ENGINEER.
4. GALV. STEEL Ogee WASHER MAY BE USED IN LIEU OF THE STEEL BEARING PLATE.
5. ALL 5/8" ⌀ BOLTS SHALL BE ASTM A307.
6. A 25'-0" SECTION OF GUARD RAIL (WITH NO SPLICE) SHALL BE INSTALLED SYMMETRICALLY WITH RESPECT TO THE SECOND POST ON EACH END OF THE STRUCTURE.
7. THE WOOD SHIM BLOCKS SHALL BE CUT & SHAPED IN THE FIELD TO FIT THE LOCATION WITH A SNUG FIT.
8. THE BOLT HOLES SHALL BE FIELD DRILLED THRU THE GUARD RAIL, SHIM BLOCKS AND THE BARRIER RAIL AT THE SAME TIME.
9. THE GUARD RAIL SHALL NOT PROTRUDE BEYOND THE GUTTER LINE.
10. THIS DETAIL WAS DEVELOPED AND APPROVED FOR USE UNDER NCHRP REPORT 350. AS PER LADOTD'S MASH IMPLEMENTATION POLICY, ITS CONTINUED USE IS ALLOWED WHILE A MASH ALTERNATIVE IS DEVELOPED OR EVALUATED.

\* DIMENSIONS ARE ASSUMED. ADJUST IN THE FIELD AS REQUIRED. HOLES SHALL BE DRILLED IN THE FIELD. SEE NOTE NO. 8.

FOR INFORMATIONAL PURPOSES ONLY

SHEET NUMBER		PARISH		CONTROL SECTION		STATE PROJECT	
P. FOSSIER	K. BRAUNER	J. DOUCET	P. FOSSIER	C. GUIDRY			
DESIGN	CHECK	DETAIL	CHECK	REVIEW	SERIES #		

APPROVED BY CHIEF ENGINEER: *Cheryl P. Adams* DATE: 5/13/2022

STATE OF LOUISIANA  
KURT M. BRAUNER  
License No. 30567  
PROFESSIONAL ENGINEER  
IN  
CIVIL ENGINEERING  
4/22/22

NEW JERSEY BARRIER RAIL RETROFIT (FOR STRUCTURES LESS THAN 60 FT. LONG)

BRIDGE AND STRUCTURAL DESIGN

DOTD  
LOUISIANA DEPARTMENT OF TRANSPORTATION & DEVELOPMENT